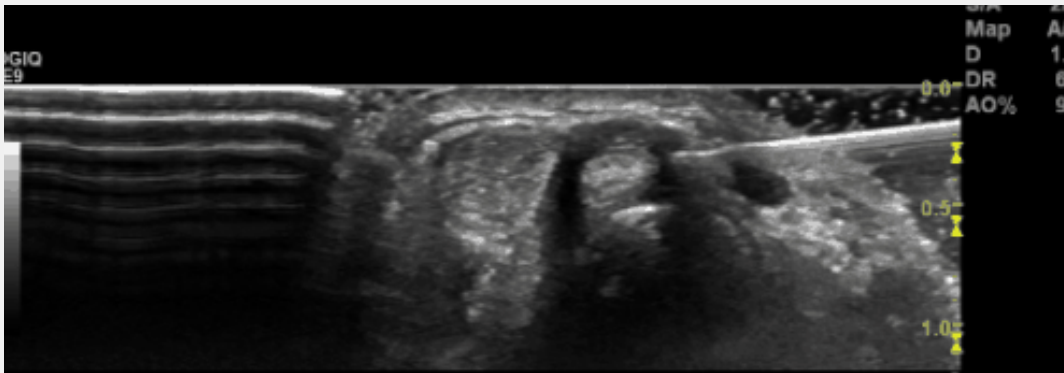




Ultrasound guided injection 1st extensor compartment



Patient position: Sitting / Lying

Arm position: Position the wrist in neutral, and slight ulnar deviation, supported on a towel or bowl.

Ultrasound: Obtain a short axis view of the 1st extensor compartment, being clear where the superficial radial nerve and the radial artery are positioned.

Injection technique: In plane technique from dorsal aspect into the sheath of the 1st extensor compartment. Ensure you can visualise the needle tip before injecting.

Suggested needle: Orange 25G 1"

The information is not intended as professional or other advice. Nor is it intended to be a substitute for possession of an appropriate level of training, qualifications, skill and experience in the matters covered.

You rely on such information at your own risk.

